



Project Management Institute

Building professionalism in project management.TM



Chapter Indonesia, Jakarta

What is Project Management?

Application of knowledge, skills, tools,
and techniques to project activities in
order to meet or exceed stakeholder needs
and expectations from a project.

From A Guide to the Project Management Body
of Knowledge (PMBOK® Guide) – 2000 Edition



Project Management Institute

© 2001 Project Management Institute, Chapter Indonesia. All rights reserved.

Why Project Management?

- Disciplined project management provides:
 - Focal point for effective communications, coordination and control
 - A plan to assess progress
 - Emphasis on time and cost performance
- Project management provides the framework for methods, processes, monitoring and change control.



Project Management Institute

© 2001 Project Management Institute, Chapter Indonesia. All rights reserved.

Benefits of Project Management for the Organization

- Increases stakeholder trust and confidence
- Continuously improves projects
 - Control
 - Change management
 - Improved project success



Project Management Institute

© 2001 Project Management Institute, Chapter Indonesia. All rights reserved.

Benefits of Project Management for the Organization

- Balances competing demands
- Improves monitoring and control (providing consistent method for tracking tasks and milestones)
- Expands communication among participants
- Refines projections of resource requirements
- Provides a mechanism for performance measurement



Project Management Institute

© 2001 Project Management Institute, Chapter Indonesia. All rights reserved.

Benefits of Project Management for the Organization

- Identifies problem areas
- Clarifies project goals and project scope
- Quantifies project risk
- Prioritizes projects



Project Management Institute

© 2001 Project Management Institute, Chapter Indonesia. All rights reserved.

Benefits of Project Management for the Individual

- Provides future source of company leaders
- Creates high visibility of project results
- Enhances both professional and personal growth opportunities
- Builds one's reputation and network
- Develops portable skills and experience

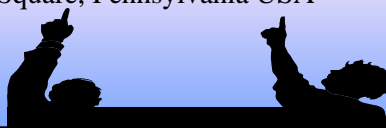


Project Management Institute

© 2001 Project Management Institute, Chapter Indonesia. All rights reserved.



- Project Management Institute (PMI®), www.pmi.org
- Not-for-profit LEADING professional association
- Over 90,000 members worldwide. Over 50,000 professionals certified as Project Management Professional (PMP) worldwide.
- Established in 1969
- Global Organization Headquartered in:
 - Newtown Square, Pennsylvania USA

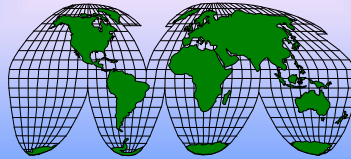


Project Management Institute

© 2001 Project Management Institute, Chapter Indonesia. All rights reserved.

PMI Worldwide

- Members in over 100 countries
- Over 375 organizations participating in the Group Billing Plan
- Almost 230 chartered and potential chapters
- 25 chartered Specific Interest Groups (SIG) and nine potential SIGs
- One College



Project Management Institute

© 2001 Project Management Institute, Chapter Indonesia. All rights reserved.

PMI Membership Representation

Top Industry Areas

- **Computers/Software/
Data Processing**
- **Information
Technology**
- **Telecommunications**
- **Business Management
Services**
- **Financial Services**
- **Construction,
including Oil & Gas**



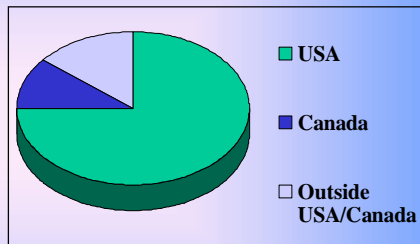
Project Management Institute

© 2001 Project Management Institute, Chapter Indonesia. All rights reserved.

PMI Membership Distribution

Geographic Distribution:

74.92% USA
10.95% Canada
14.13% Outside
USA/Canada

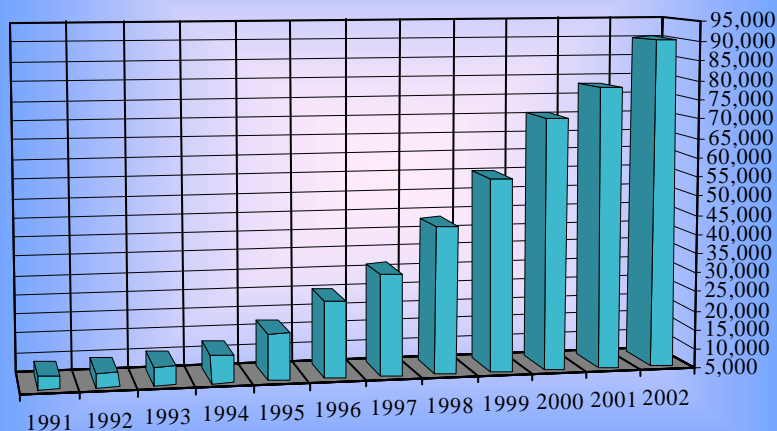


Project Management Institute

© 2001 Project Management Institute, Chapter Indonesia. All rights reserved.

PMI Membership Growth

10-Year History



Project Management Institute

© 2001 Project Management Institute, Chapter Indonesia. All rights reserved.

PMI Products and Services



Project Management Institute

© 2001 Project Management Institute, Chapter Indonesia. All rights reserved.

Sampling of Organizations with Over 100 PMI Members

- American Express
- AT&T
- Bell Atlantic
- Boeing Company
- Compaq Computer Corp.
- Compuware Corporation
- Ernst & Young
- Ericsson
- GTE
- Federal Express
- Hewlett-Packard Co.
- Honeywell Inc.
- IBM
- Lockheed Martin
- Lucent Technologies
- Motorola Inc.
- Nortel
- PriceWaterhouseCoopers
- Shell Services
- Siemens AG
- Sprint
- Unisys
- USAA
- US Army

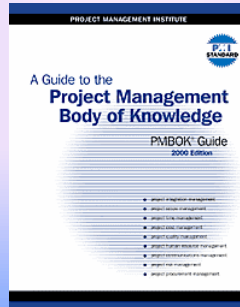


Project Management Institute

© 2001 Project Management Institute, Chapter Indonesia. All rights reserved.

Project Management Standards

PMI's *A Guide to the Project Management Body of Knowledge (PMBOK® Guide)* – 2000 Edition



Project Management Institute

© 2001 Project Management Institute, Chapter Indonesia. All rights reserved.

PMBOK® Guide – 2000 Edition Knowledge Areas

- Project Integration Management
- Project Scope Management
- Project Time Management
- Project Cost Management
- Project Quality Management
- Project Human Resource Management
- Project Communications Management
- Project Risk Management
- Project Procurement Management

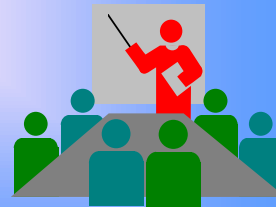


Project Management Institute

© 2001 Project Management Institute, Chapter Indonesia. All rights reserved.

Project Management Certification

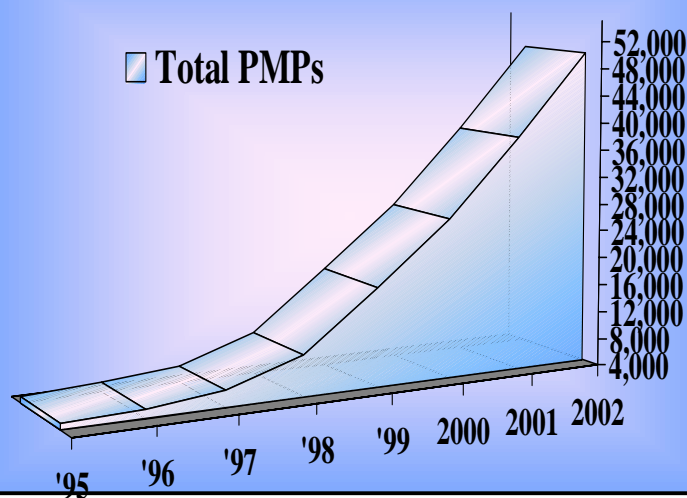
- Project Management Professional (PMP) Certification
 - Introduced in 1984
- Requirements:
 - Demonstrated Experience
 - Demonstrated Education
 - Pass Examination
 - Agree to Abide by the Code of Professional Conduct



Project Management Institute

© 2001 Project Management Institute, Chapter Indonesia. All rights reserved.

Demand for PMP Certification



Project Management Institute

© 2001 Project Management Institute, Chapter Indonesia. All rights reserved.

Individual Benefits of PMP Certification

- Provides professional/personal recognition
- Expedites professional advancement
- Creates job growth/opportunities within an organization
- Provides framework for standardized project management requirements
- Increases employee's value to the organization



Project Management Institute

© 2001 Project Management Institute, Chapter Indonesia. All rights reserved.

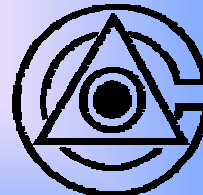
Project Management Certification

PMI's PMP Certification Program Department

Recently received **ISO 9001** certification
and became the first Certification Program
Department in the world
to achieve the honor.



A DIVISION OF
THE NATIONAL REGISTRY



ACCREDITED BY
THE COUNCIL FOR
ACCREDITATION



Project Management Institute

© 2001 Project Management Institute, Chapter Indonesia. All rights reserved.

Project Management Education

- PMI SeminarsWorld
- Annual Seminars & Symposium
- Component Meeting & Training
- Registered Education Providers (R.E.P.)



Project Management Institute

© 2001 Project Management Institute, Chapter Indonesia. All rights reserved.

Project Management Publications



- **Periodicals**
 - Quarterly *Project Management Journal*®
 - Monthly *PM Network*®
 - Monthly *PMI Today*®
- **Publishing Division**
 - Largest project management-focused publishing program in existence

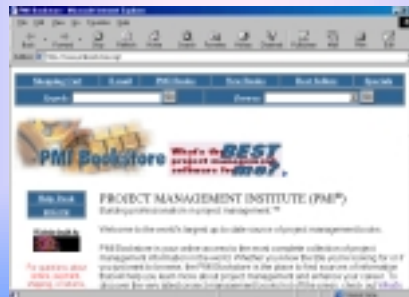


Project Management Institute

© 2001 Project Management Institute, Chapter Indonesia. All rights reserved.

Project Management Publications

- PMI On-Line bookstore
 - www.pmibookstore.org
- PMI *Information SourceGuide*
- The James R. Snyder Center for Project Management Knowledge and Wisdom

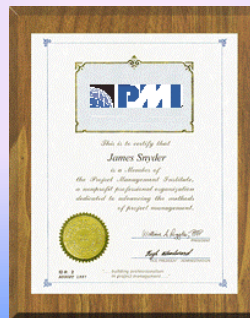


Project Management Institute

© 2001 Project Management Institute, Chapter Indonesia. All rights reserved.

Membership Options

- Individual Membership
- Student Membership
- Membership through the Group Billing Plan



Project Management Institute

© 2001 Project Management Institute, Chapter Indonesia. All rights reserved.

PMI Indonesia (PMII)
Institut Manajemen Proyek Indonesia
Founded in 1996, Chartered in 1997,
Total community: Approx. 250 (1997 - present)



Project Management Institute

© 2001 Project Management Institute, Chapter Indonesia. All rights reserved.

PMI Indonesia Corporate Supporters

- Accenture
- APMX/PTMC
- Astragraphia
- BP Indonesia
- Ericsson Indonesia
- Prosys Bangun Persada
- Unocal Geothermal of Indonesia, Ltd.
- Truba Jurong Engineering



Project Management Institute

© 2001 Project Management Institute, Chapter Indonesia. All rights reserved.



Project Management Institute

Headquarters

Four Campus Boulevard

Newtown Square, PA 19073-3299 USA

TEL: +610-356-4600 • FAX: +610-356-4647

E-Mail: pmihq@pmi.org • Internet: www.pmi.org

Chapter Indonesia, Jakarta

Wisma Standard Chartered Bank 22/F

Jl. Jend. Sudirman Kav. 33 A, Jakarta 10220

Chapter President: Rahayu S. Arifin, PMP

E-Mail: rahayu.s.arifin@accenture.com



Project Management Institute

© 2001 Project Management Institute, Chapter Indonesia. All rights reserved.